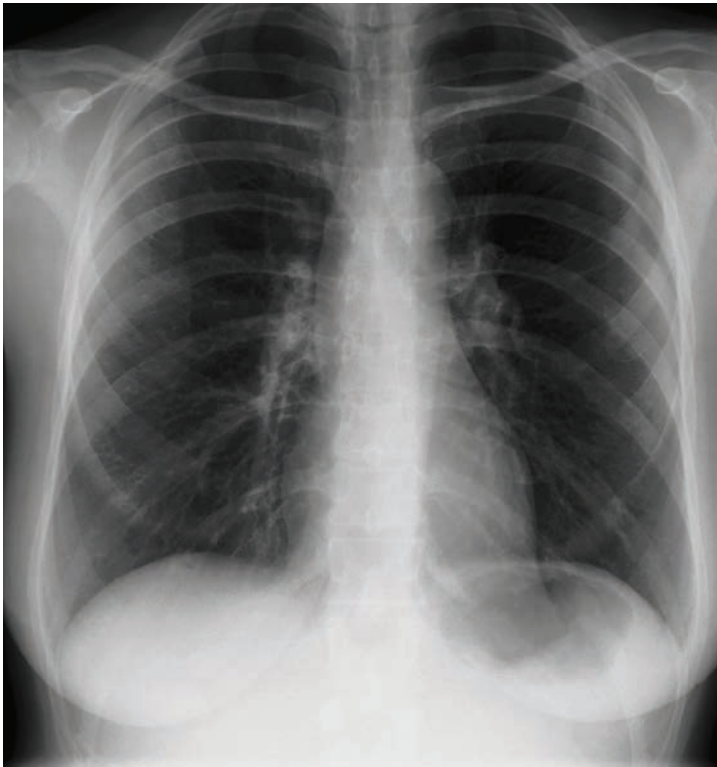


MORE INFORMATION. HIGHER CONFIDENCE. BETTER CARE.

Increased clinical information improves capture of the complete thoracic anatomy



Zero-crossover film technology and asymmetric film emulsion/screen pairings allow these systems to capture two distinct images with one exposure.

- An image optimized to display lung parenchyma is captured on one side of the film.
- An image optimized to satisfy exposure parameters for mediastinum, retrocardiac, and sub-diaphragmatic anatomy is captured on the other side.

This asymmetric emulsion/screen design provides a full balance of exposure contrast levels (compared to conventional rare-earth film-screen combinations), without compromising anatomical visualization.

CAPTURE TWO DISTINCT IMAGES WITH ONE EXPOSURE FOR INCREASED CLINICAL INFORMATION

CARESTREAM INSIGHT thoracic imaging systems improve capture of thoracic anatomy by presenting two distinct images on one film. On the viewbox, these images are perfectly aligned due to excellent film-screen contact and strict manufacturing specifications.

Clinical Benefits

These systems increase the quality and volume of information available for diagnosis and the confidence with which that information can be interpreted, while decreasing the number of repeat examinations.

Characteristics:

- High resolution
- Variable contrast through film and screen selection

CARESTREAM INSIGHT Thoracic Imaging

Standard Contrast:

- CARESTREAM INSIGHT Thoracic Film
- CARESTREAM INSIGHT Thoracic Screens
- Speed: 250 / mid-lung contrast: 1.40 / mediastinal contrast: 0.7

With the widest latitude, this system provides lower lung-field contrast and higher mediastinal contrast. This standard level of contrast may be preferred by radiologists accustomed to reading chest images with a very long grayscale.

High Lung-Field Contrast:

- CARESTREAM INSIGHT Thoracic Film
- CARESTREAM INSIGHT HC Thoracic Screens
- Speed: 335 / mid-lung contrast: 2.00 / mediastinal contrast: 0.5

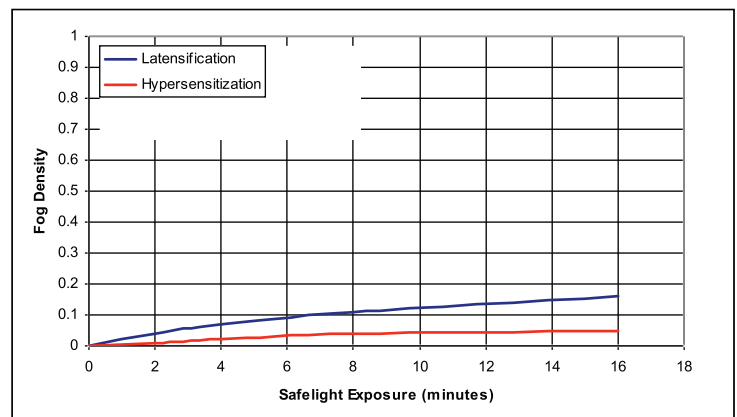
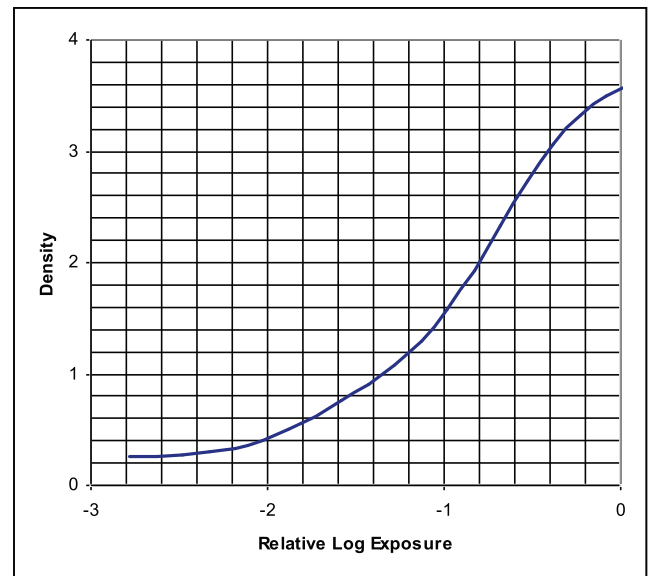
This system provides higher lung-field and lower mediastinal contrast than the standard-contrast system described above. Overall system contrast is closest to the look of most conventional thoracic imaging systems.

Safelighting

GBX-2 or equivalent, standard frosted 15-watt bulb

CARESTREAM INSIGHT Thoracic Film

1/25 second Simulated Green Screen Exposure



Product Specifications

CARESTREAM INSIGHT Thoracic Film
100-sheet box. Sheet Sizes – not interleaved.

Size

40 x 40 cm
35 x 43 cm
35 x 35 cm

CAT No.

157 2916
828 8201
107 8187

FOR MORE INFORMATION

Learn more about CARESTREAM INSIGHT Imaging – and what they can do for you and your patients. For other sizes or formats, contact your sales representative.