

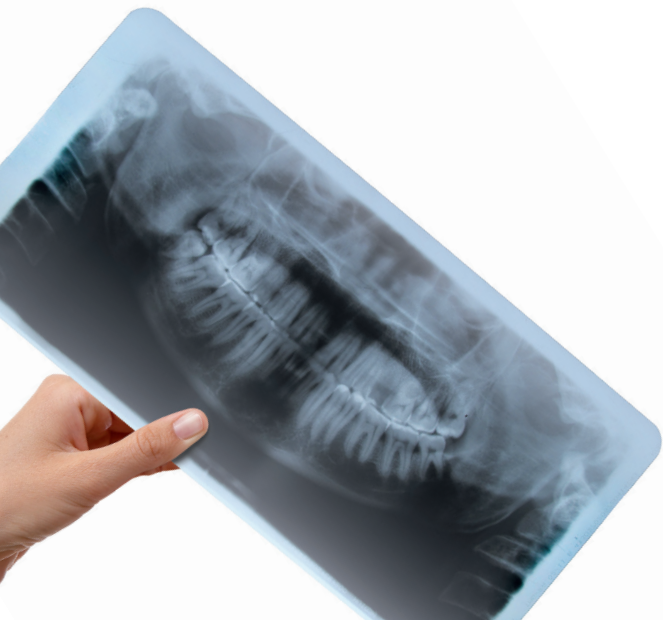
Extraoral Cassettes and Screens



Cassettes and Screens for Extraoral Imaging

Superb image quality

Extraoral cassettes complement LANEX screens for high quality images each and every time.



Extraoral Cassette with Screens

Exceptional quality and value

Extraoral cassettes provide the perfect mix of value and performance to help you capture high quality images at an affordable price.

Features include:

- Double latch opening and closing
- Uniform screen/film contact from specially designed back panel and fitted foam lining
- Standard quality construction
- Lead shielding to reduce backscatter for sharper images
- Available with multiple Carestream Dental intensifying screens to meet your imaging needs

Ordering Information

Reference Number	Description
Extraoral Cassettes	
100 2773	15x30 cm Extraoral Cassette with LANEX Regular Screens
100 2807	8x10 in Extraoral Cassette with LANEX Regular Screens
100 2740	15x30 cm Extraoral Cassette with LANEX Medium Screens



Replacement Screens Ordering Information

Reference Number	Description	Film Type
Replacement screen items with foam for hard cassettes		
1207372	PR 8X10 LANEX Regular Screen	Green Sensitive
Replacement screen items without foam for hard cassettes		
1231299	PR 8X10 LANEX Regular Screen	Green Sensitive
1292671	PR 15X30CM LANEX Medium Screen	Green Sensitive
1647205	PR 15X30CM LANEX Regular Screen	Green Sensitive
1604016	PR 15X30CM X-OMATIC Regular Screen	Blue Sensitive
8114654	PR 5X12 LANEX Medium Screen	Green Sensitive
1414689	PR 5X12 LANEX Regular Screen	Green Sensitive
1820885	PR 5X12 X-OMATIC Regular Screen	Blue Sensitive
Replacement Hinged screens for use in soft cassettes		
1367432	PR 15X30CM LANEX Medium Screen - HINGED	Green Sensitive
1414606	PR 15X30CM LANEX Regular Screen - HINGED	Green Sensitive
8387540	PR 15X30CM X-OMATIC Regular Screen - HINGED	Blue Sensitive
1388123	PR 4.88X14.75 LANEX Medium Screen - HINGED	Green Sensitive
1414549	PR 4.88X14.75 LANEX Regular Screen - HINGED	Green Sensitive

For more information, call **800.933.8031** or visit **carestream.com**.